

**CLIENT**  
Wheeler Field Lot 2

**PROJECT**  
Residence

**PROJECT NO.**  
2023-3

**DRAWN BY**  
ARH

**ISSUE**  
09.14.2023





Reiss Building and Renovation>  
756 Buck Hill Rd W  
Hinesburg, VT 05461

Foundation

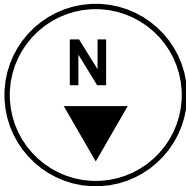
CLIENT  
Wheeler Field Lot 2  
Boltom, VT

PROJECT  
Residence

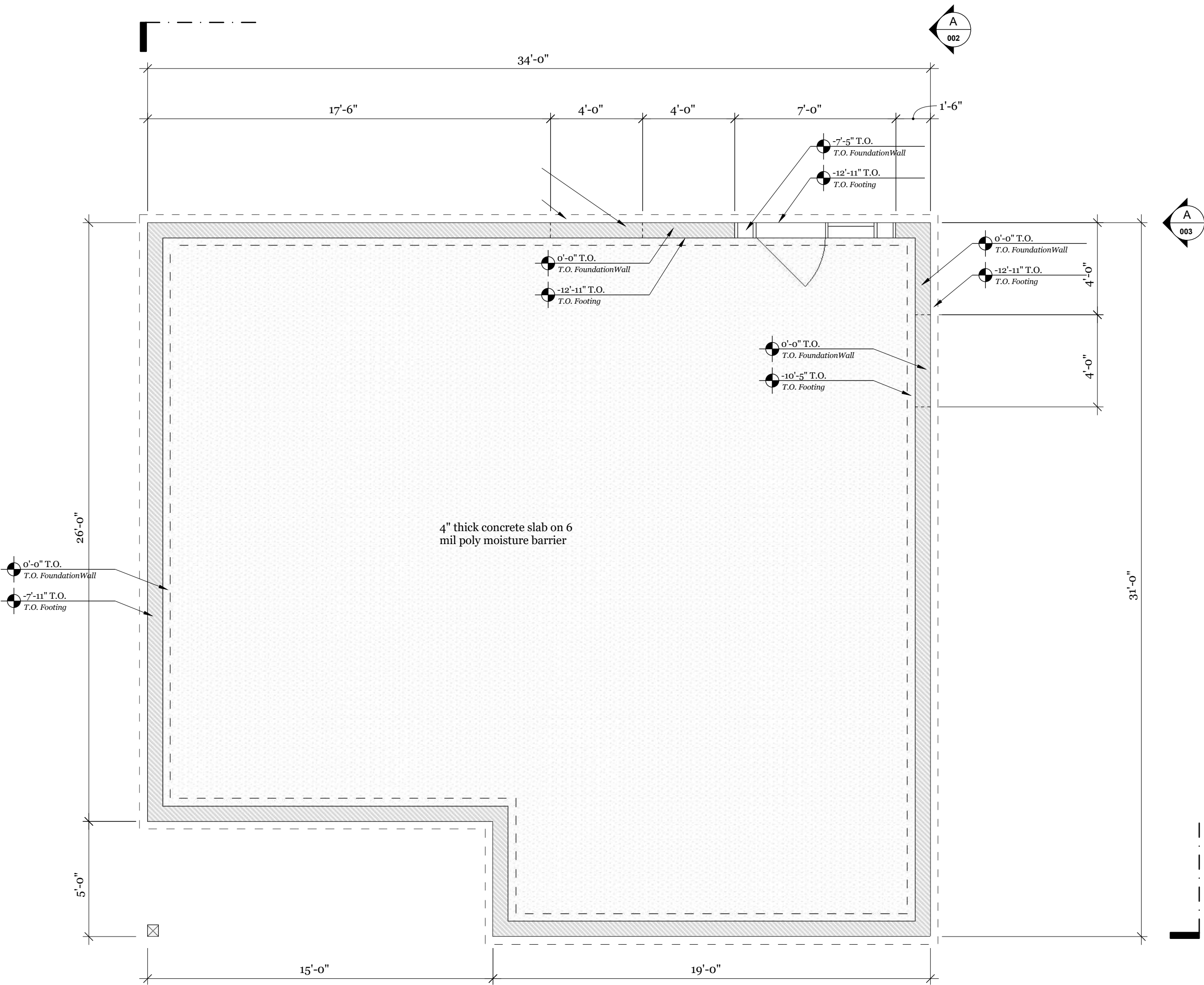
DRAWN BY  
ARH |

ISSUE  
09.14.23

RE-ISSUE  
2.7.2024

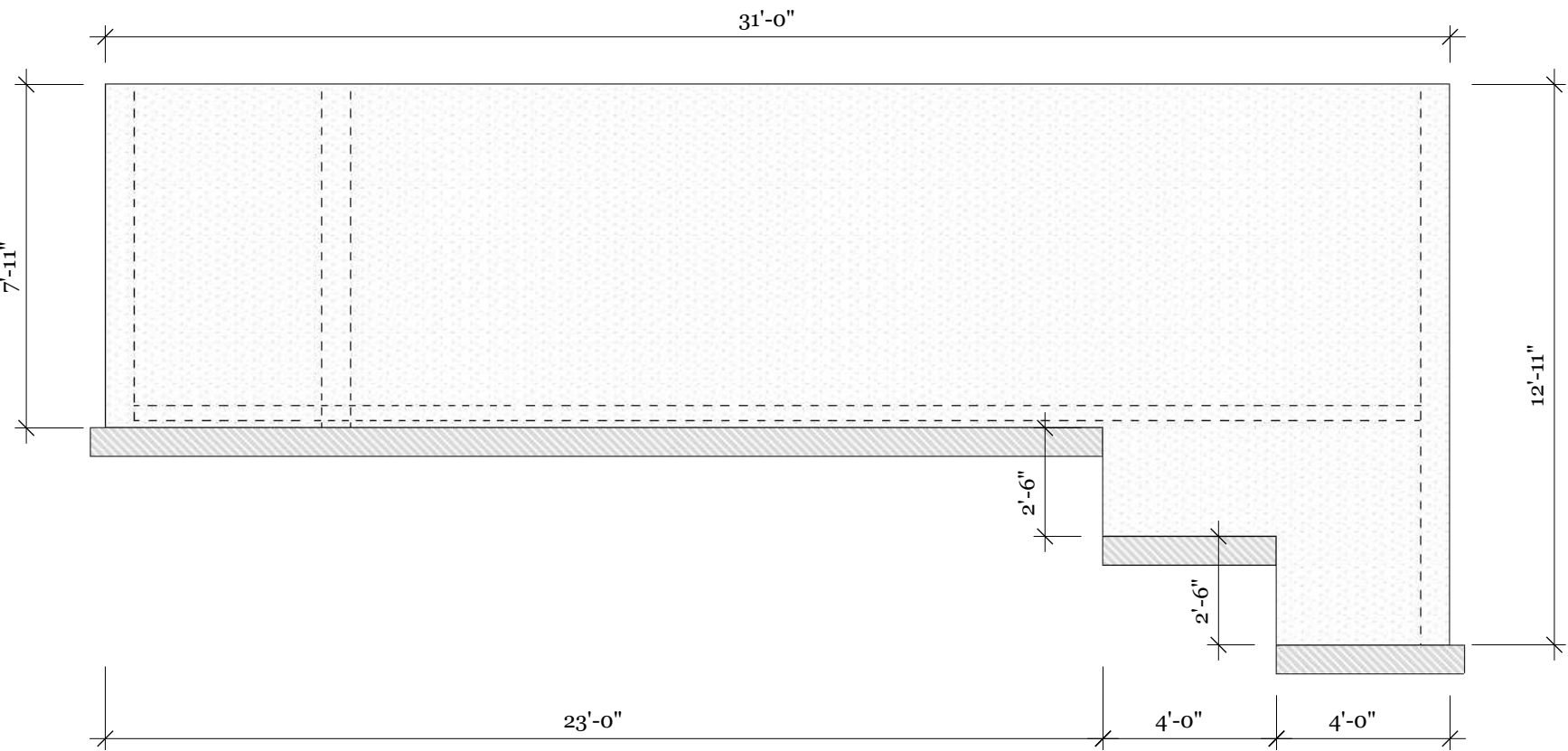


A.101



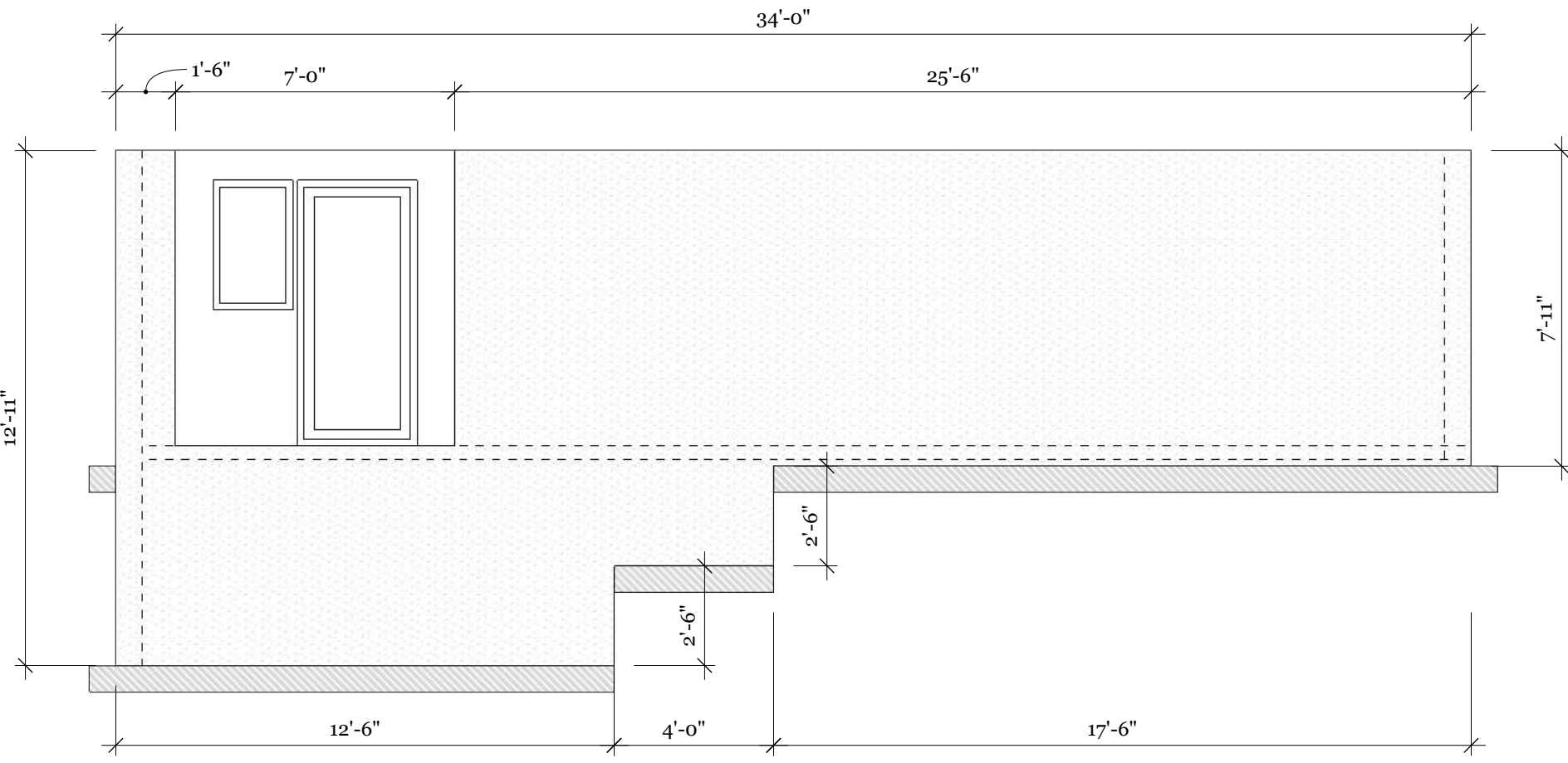
Foundation Plan  
scale: 1/4"=1'

A 001



Foundation Elevation West  
scale: 1/4"=1'

A 003



Foundation Elevation South  
scale: 1/4"=1'

A 002



Reiss Building and Renovation>  
756 Buck Hill Rd W  
Hinesburg, VT 05461

Floor Plans

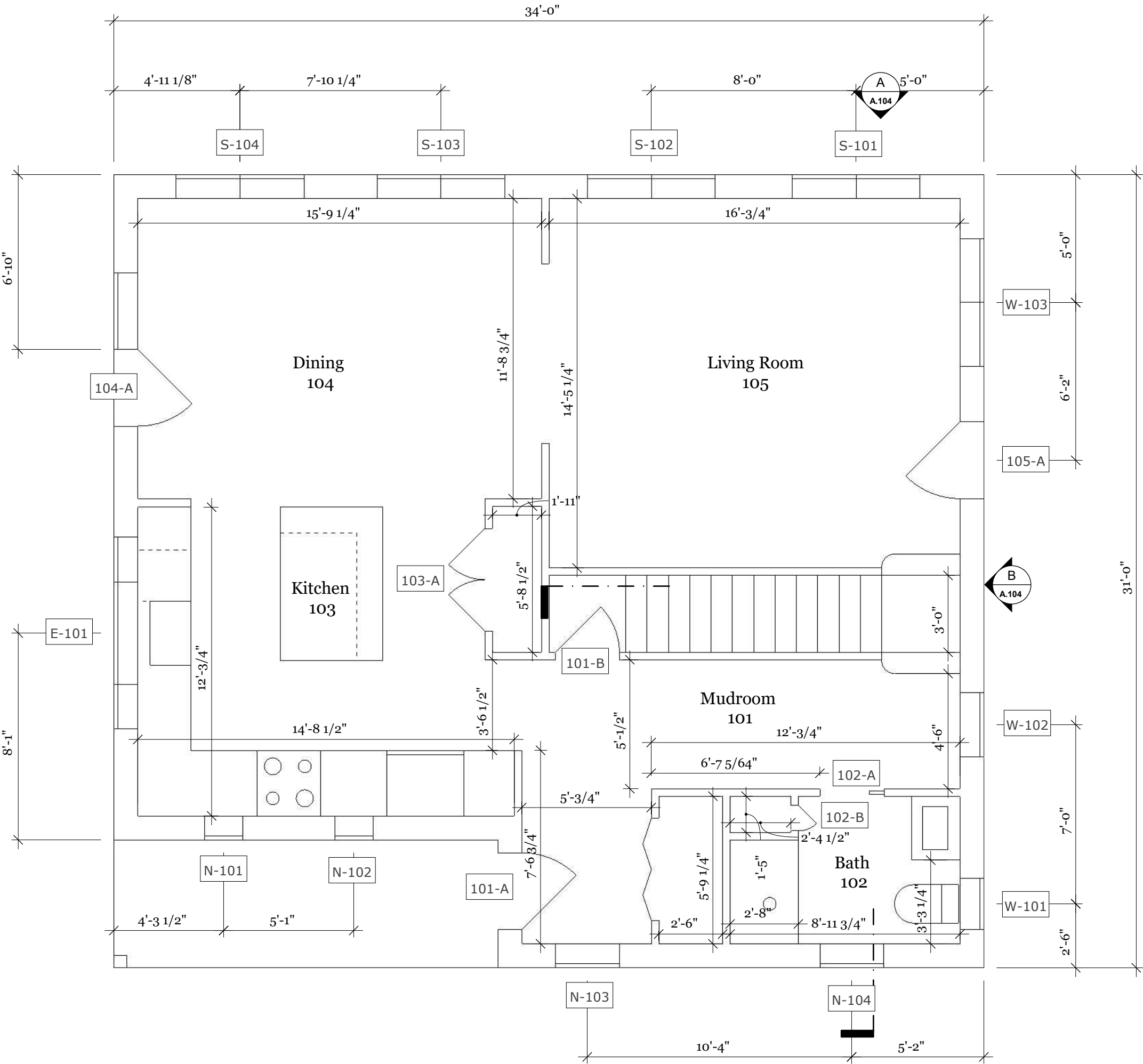
CLIENT  
Wheeler Field Lot 2  
Boltom, VT

PROJECT  
Residence

DRAWN BY  
ARH |

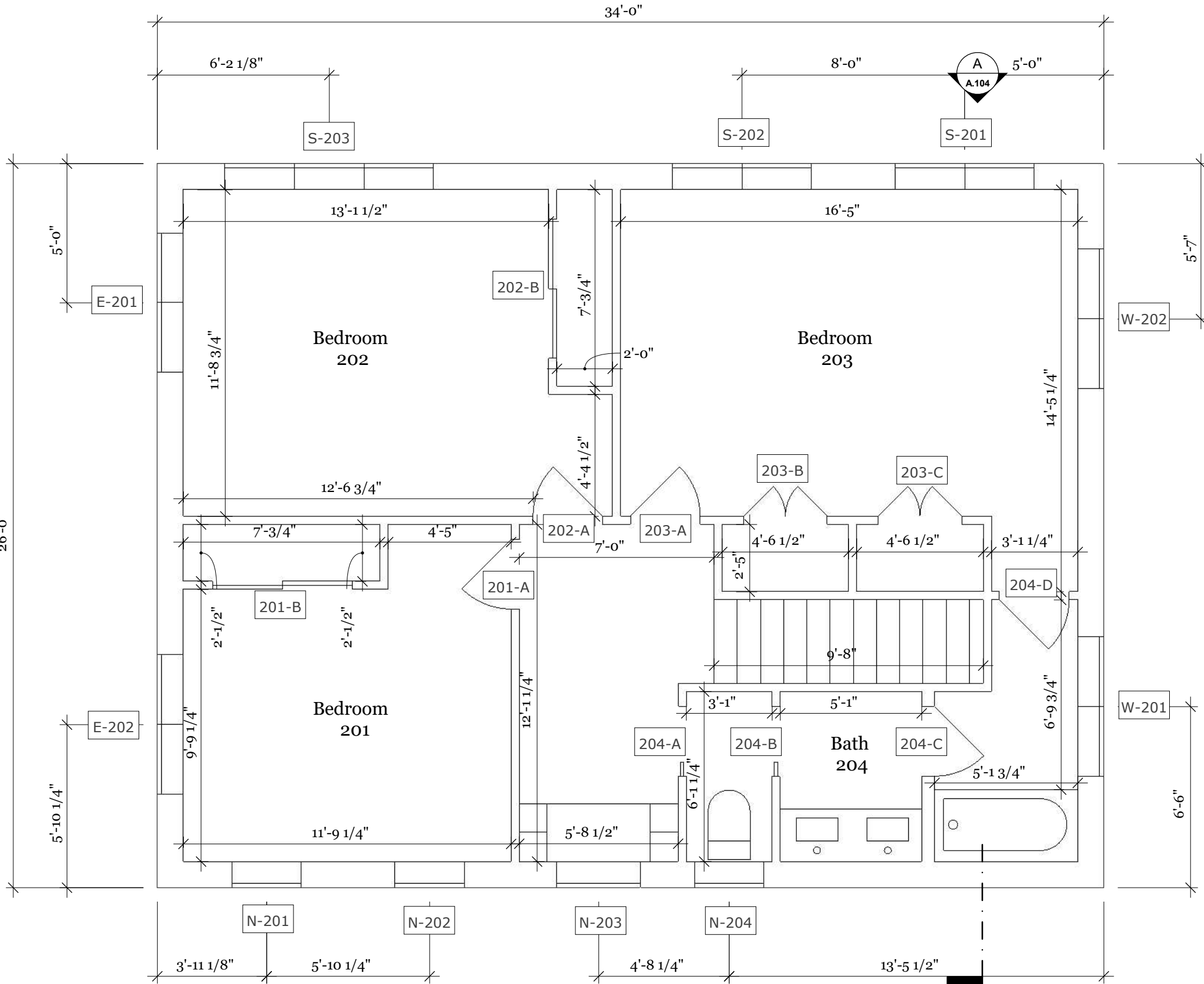
ISSUE  
09.14.23

RE-ISSUE  
2.7.2024



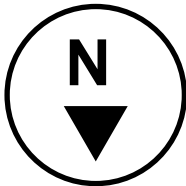
First Floor Plan  
scale: 1/4"=1'

A 001



Second Floor Plan  
scale: 1/4"=1'

A 002



A.102



**Reiss Building and Renovation>**  
756 Buck Hill Rd W  
Hinesburg, VT 05461

Elevations

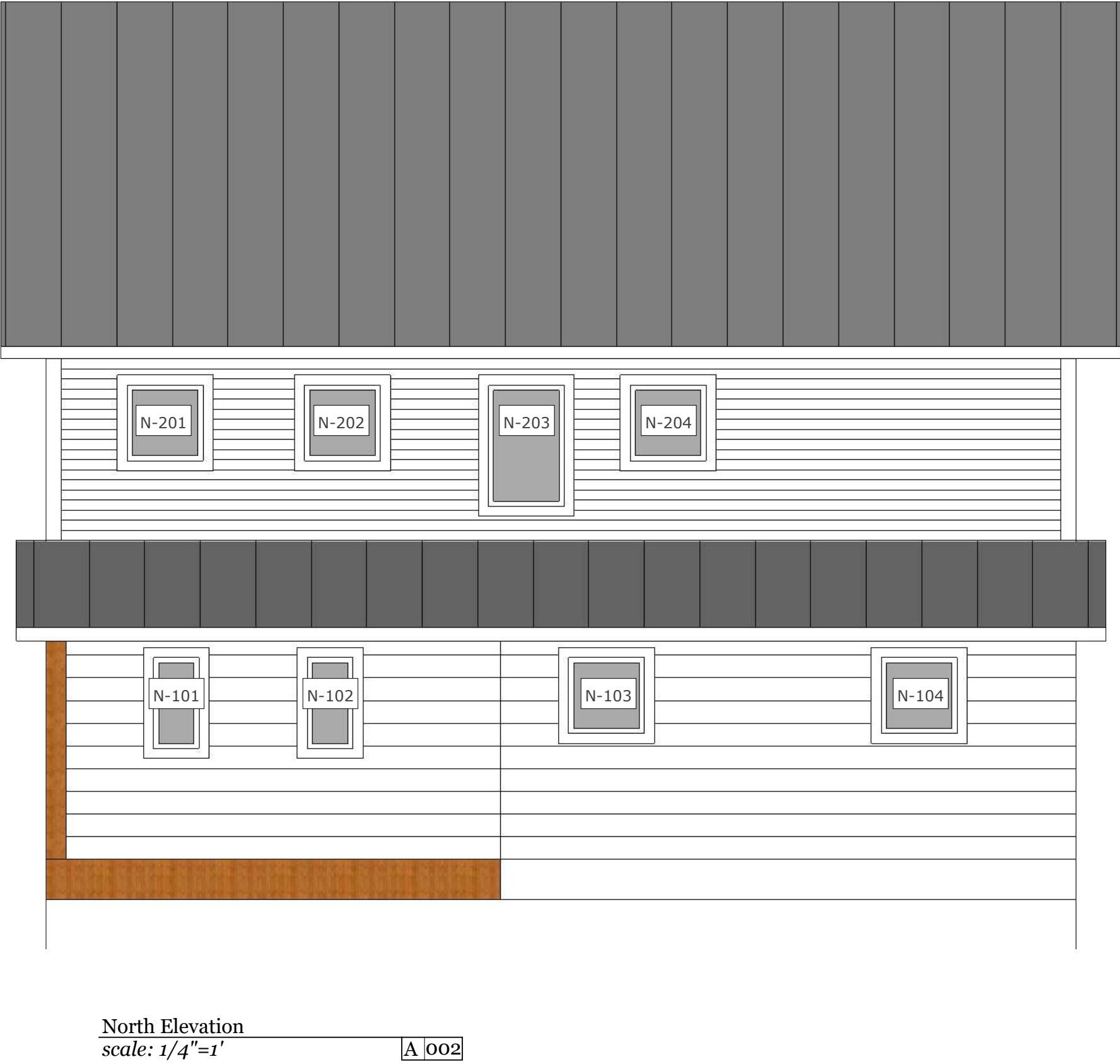
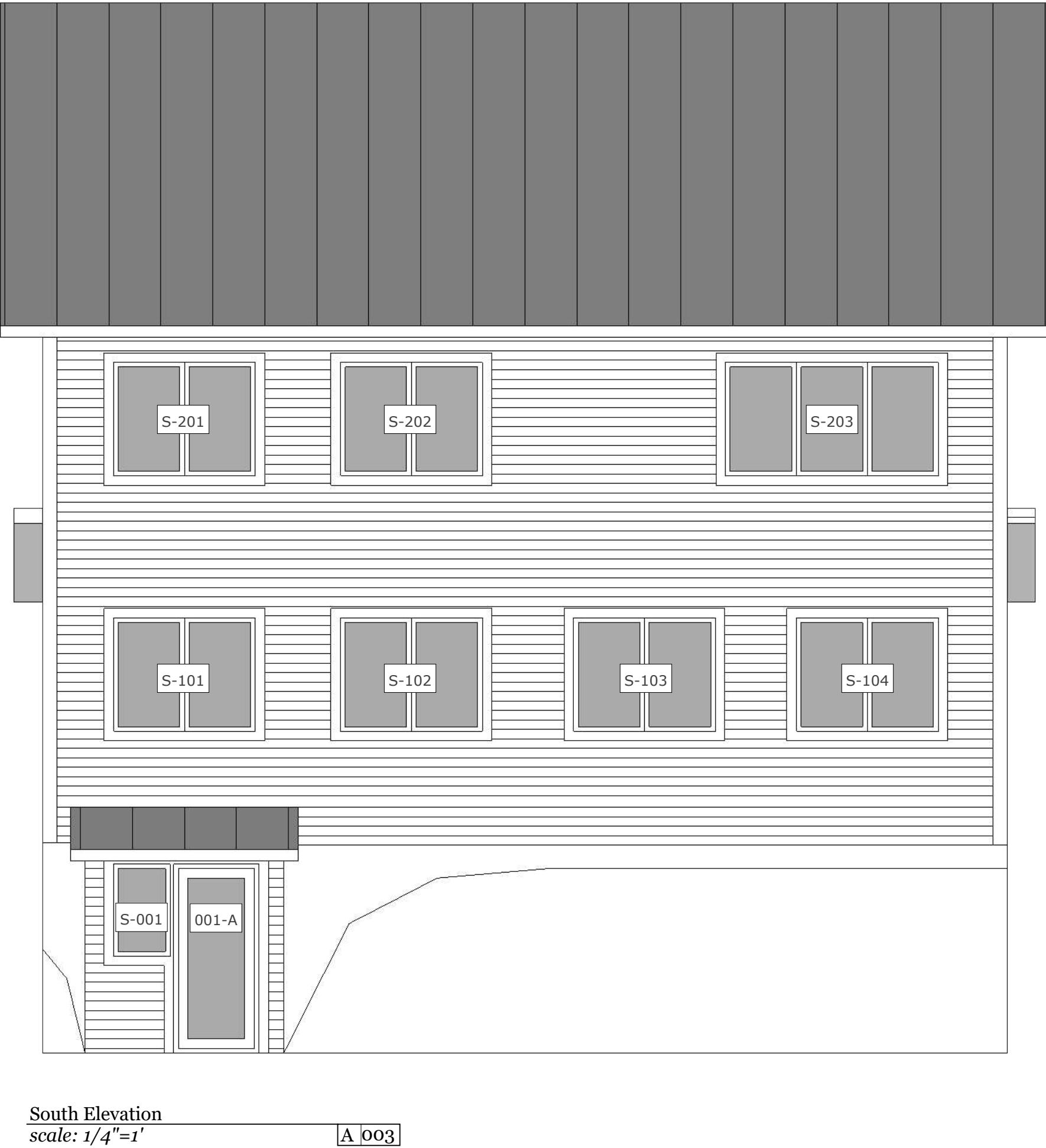
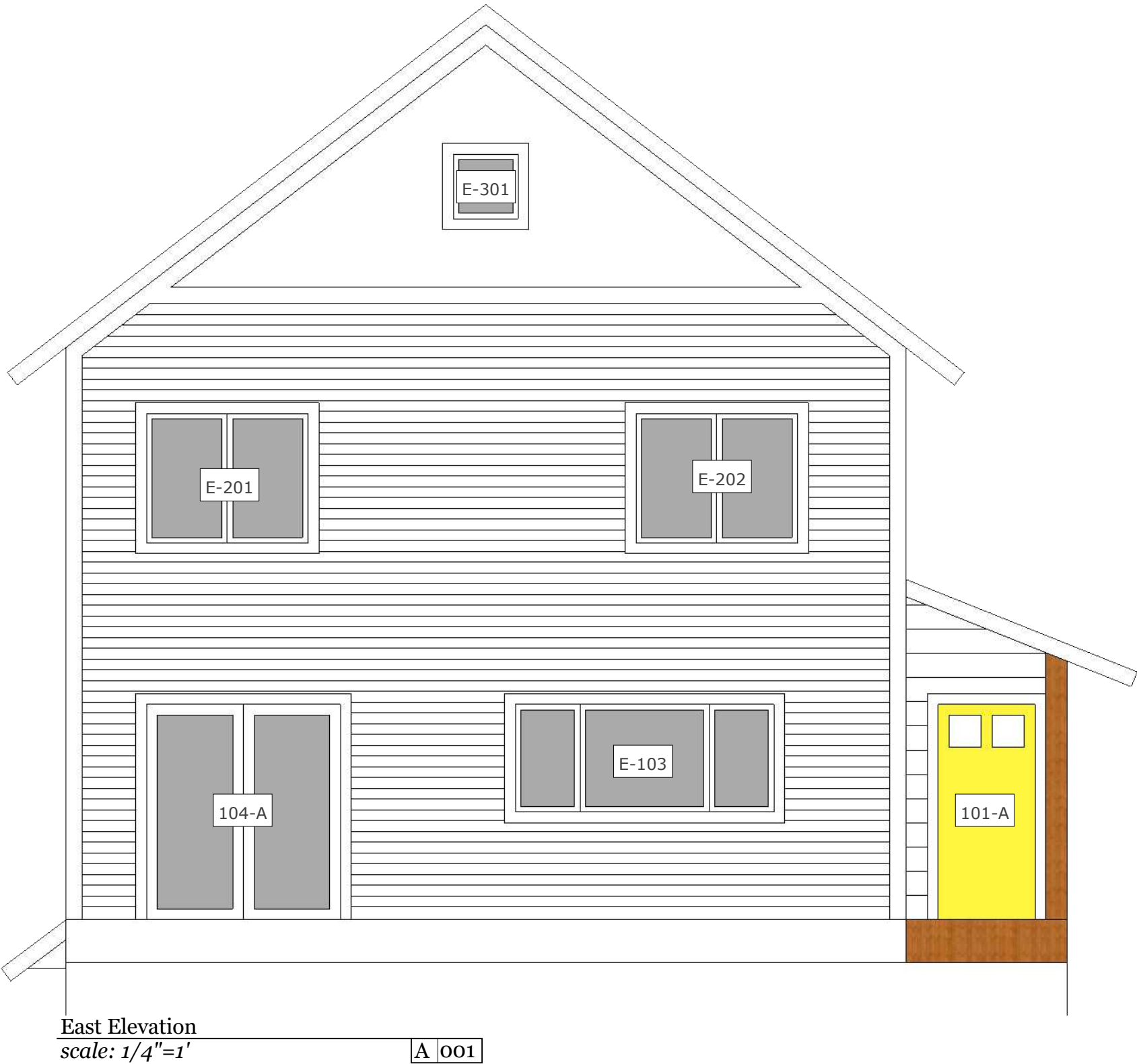
**CLIENT**  
Wheeler Field Lot 2  
Boltom, VT

**PROJECT**  
Residence

**DRAWN BY**  
ARH |

**ISSUE**  
09.14.23

**RE-ISSUE**  
2.7.2024





Reiss Building and Renovation>  
756 Buck Hill Rd W  
Hinesburg, VT 05461

Cross Sections

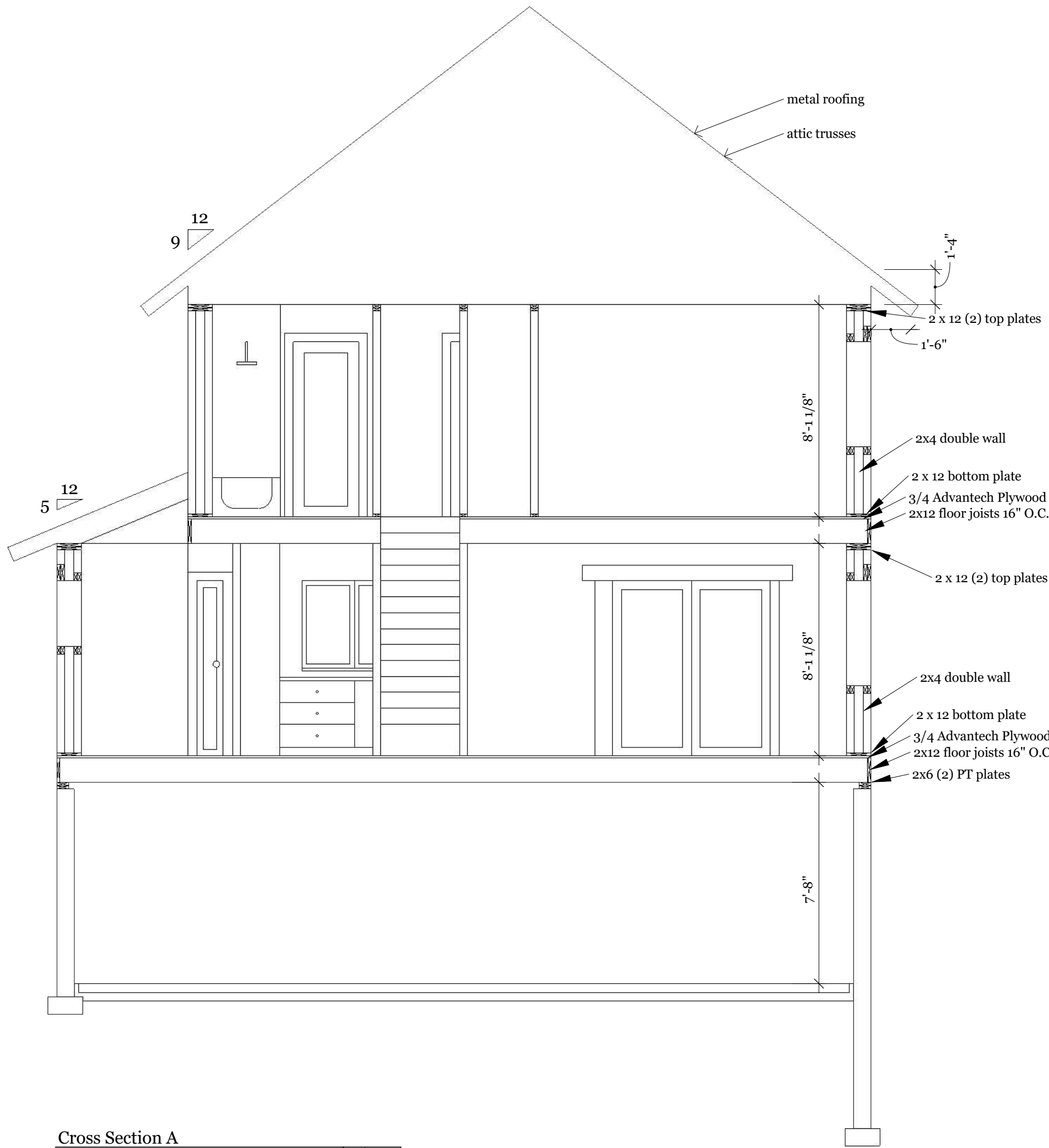
CLIENT  
Wheeler Field Lot 2  
Boltom, VT

PROJECT  
Residence

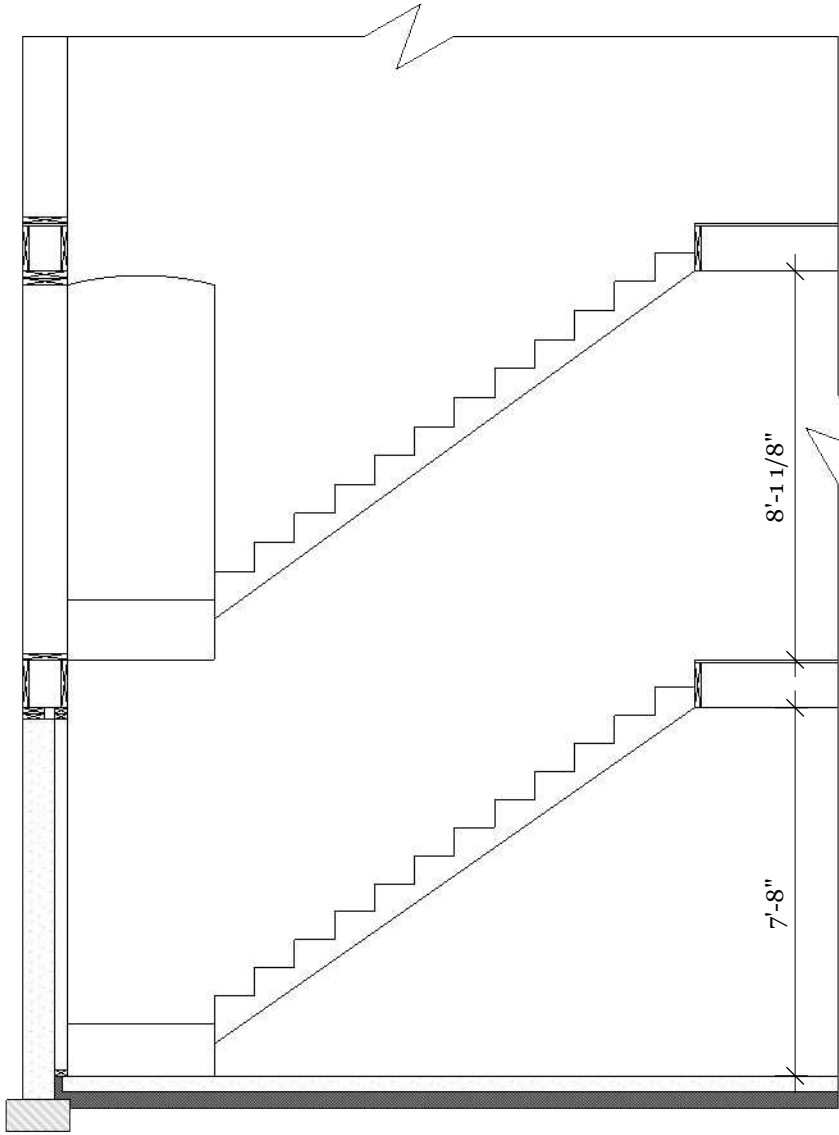
DRAWN BY  
ARH |

ISSUE  
09.14.23

RE-ISSUE  
2.7.2024



Cross Section A  
scale: 1/4"=1' [A 001]

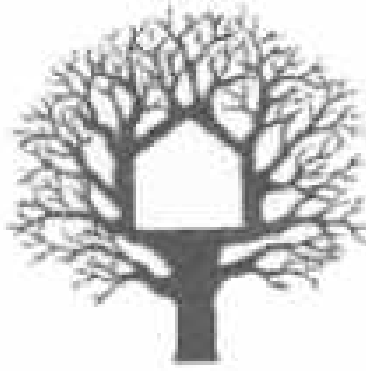


Cross Section B  
scale: 1/4"=1' [A 001]



WINDOW KEY									
TYPE	COUNT	WIDTH	HEIGHT	OPERATION	MODEL	GLAZING	Ext. COLOR	Int. COLOR	
A	10	5-5	3-11 5/8	Casement	ELCA3347 2W	triple	Black	Black	
B	1	8-1	3-11 5/8	Casement	ELCA3347 3W	triple	Black	Black	
C	2	2-5	3-11 5/8	Casement	ELCA2947	triple	Black	Black	
D	6	2-5	2-3 5/8	awning	ELAW2927	triple	Black	Black	
E	2	2-1	1-11 5/8	awning	ELAW2523	triple	Black	Black	
F	2	1-5	2-11 5/8	Casement - RH	ELCA1735	triple	Black	Black	
G	1	8-0	3-3 5/8	RH Casement/ fixed/ RH Casement	ELCA2539/fixed/ELCA2539	triple	Black	Black	
H	1	5-5	2-3 5/8	awning	ELAWN3327	triple	Black	Black	
I	1	2-1	3-3 5/8	casement RH	ELCA2539	triple	Black	Black	
WINDOW SCHEDULE									
WDW	TYPE	OPERATION	WIDTH	HEIGHT	HEIGHT/FLOOR	GLAZING	NOTES		
N-101	F	Casement - RH	1-5	2-11 5/8	6-8	triple			
N-102	F	Casement - RH	1-5	2-11 5/8	6-8	triple			
N-103	D	awning	2-5	2-3 5/8	6-8	triple			
N-104	D	awning	2-5	2-3 5/8	6-8	triple			
N-201	D	awning	2-5	2-3 5/8	6-8	triple			
N-202	D	awning	2-5	2-3 5/8	6-8	triple			
N-203	C	Casement - RH	2-5	3-11 5/8	6-8	triple			
N-204	D	awning	2-5	2-3 5/8	6-8	triple			
E-101	G	RH Casement/ fixed/ RH Casement	8-0	3-3 5/8	6-8	triple			
E-201	A	Casement	5-5	3-11 5/8	6-8	triple			
E-202	A	Casement	5-5	3-11 5/8	6-8	triple			
E-301	E	awning	2-1	1-11 5/8	6-8	triple			
S-001	I	Casement	2-1	3-3 5/8	6-8	triple			
S-101	A	Casement	5-5	3-11 5/8	6-8	triple			
S-102	A	Casement	5-5	3-11 5/8	6-8	triple			
S-103	A	Casement	5-5	3-11 5/8	6-8	triple			
S-104	A	Casement	5-5	3-11 5/8	6-8	triple			
S-201	A	Casement	5-5	3-11 5/8	6-8	triple			
S-202	A	Casement	5-5	3-11 5/8	6-8	triple			
S-203	B	Casement	8-1	3-11 5/8	6-8	triple			
W-101	D	awning	2-5	2-3 5/8	6-8	triple			
W-102	C	Casement	2-5	3-11 5/8	6-8	triple			
W-103	A	Casement	5-5	3-11 5/8	6-8	triple			
W-201	H	awning	5-5	2-3 5/8	6-8	triple			
W-202	A	Casement	5-5	3-11 5/8	6-8	triple			
W-301	E	awning	2-1	1-11 5/8	6-8	triple			

EXTERIOR DOOR SCHEDULE					
Door	Int/Ext	Manf.	Operation	Width	Height
101-A	Ext	Thermatru	LH Inswing	3-6	6-8
103-A	Exr	Marvin patio Door	Double Swing	6-0	6-8
104-A	Ext	Thermatru Glass Patio	RH Inswing	3-0	6-8
001-A	Ext	Thermatru Glass Patio	RH Inswing	3-0	6-8
INTERIOR DOOR SCHEDULE					
Door	Int/Ext	Manf.	Operation	Width	Height
101-B	Int.		LH	2-6	6-8
102-A	Int.		pocket	2-6	6-8
102-B	Int.		LH	1-0	6-8
103-A	Int		Double swing	4-0	6-8
201-A	Int.		RH	2-6	6-8
201-B	Int		bipass	5-0	6-8
202-A	Int.		RH	2-6	6-8
202-B	Int		bipass	5-0	6-8
203-A	Int.		LH	2-6	6-8
203-B	Int		Double swing	3-0	6-8
203-C	Int.		Double swing	3-0	6-8
204-A	Int		pocket	2-6	6-8
204-B	Int.		pocket	2-6	6-8
204-C	Int		LH	2-6	6-8
204-D	Int.		RH	2-6	6-8



Reiss Building and Renovation>  
756 Buck Hill Rd W  
Hinesburg, VT 05461

Window and Door  
Schedule

CLIENT  
Wheeler Field Lot 2  
Boltom, VT

PROJECT  
Residence

DRAWN BY  
ARH |

ISSUE  
09.14.23

RE-ISSUE  
2.7.2024